

# Vorspiel

## Fagott 1.

Jan. Stuten

Sehr ruhig

1 a tempo

2 Etw. belebten.

3 allmähl. beleb. espr. b

4

5

6 wied. beschleun.

7 Lebhaft

8 Vorwärts rit. Breit

9 Breit u. Schwer.

etw. Zurückhalten

*mf* *f* *ff* *espr.* *rit.* *poco accel.* *Energisch.* *p* *ff*





etwas zurückhalten

**10** Rasch

Handwritten musical notation on a single staff. It begins with a treble clef and a 9/8 time signature. The first measure contains a triplet of eighth notes. A dynamic marking of *ff* is present. The piece concludes with a double bar line and a 12/8 time signature.

Handwritten musical notation on a single staff. It starts with a treble clef and a 9/8 time signature. A dynamic marking of *ff* is written above the staff. The piece ends with a double bar line and a 12/8 time signature.

Handwritten musical notation on a single staff. It begins with a treble clef and a 9/8 time signature. A dynamic marking of *p* is written below the staff. The word "spöttisch" is written below the staff. The piece concludes with a double bar line and a 12/8 time signature.

**12** langsam

Handwritten musical notation on a single staff. It starts with a treble clef and a 9/8 time signature. A dynamic marking of *p* is written below the staff. The piece concludes with a double bar line and a 12/8 time signature.

Handwritten musical notation on a single staff. It begins with a treble clef and a 9/8 time signature. A dynamic marking of *p* is written below the staff. The piece concludes with a double bar line and a 12/8 time signature.

Handwritten musical notation on a single staff. It starts with a treble clef and a 9/8 time signature. A dynamic marking of *p* is written below the staff. The piece concludes with a double bar line and a 12/8 time signature.

Tempo beleben

Handwritten musical notation on a single staff. It begins with a treble clef and a 12/8 time signature. A dynamic marking of *ff* is written below the staff. The piece concludes with a double bar line and a 9/8 time signature.

**15** lebhaft Handwritten musical notation on a single staff. It starts with a treble clef and a 6/8 time signature. A dynamic marking of *ff* is written below the staff. The piece concludes with a double bar line and a 9/8 time signature.

Handwritten musical notation on a single staff. It begins with a treble clef and a 12/8 time signature. A dynamic marking of *fp* is written below the staff. The piece concludes with a double bar line and a 12/8 time signature.

Handwritten musical notation on a single staff. It starts with a treble clef and a 12/8 time signature. A dynamic marking of *ff* is written below the staff. The piece concludes with a double bar line and a 12/8 time signature.

Handwritten musical notation on a single staff. It begins with a treble clef and a 6/8 time signature. A dynamic marking of *mf* is written below the staff. The piece concludes with a double bar line and a 9/8 time signature.

Handwritten musical notation on a single staff. It starts with a treble clef and a 6/8 time signature. A dynamic marking of *mf* is written below the staff. The piece concludes with a double bar line and a 12/8 time signature.

Handwritten musical notation on a single staff. It begins with a treble clef and a 6/8 time signature. A dynamic marking of *mf* is written below the staff. The piece concludes with a double bar line and a 12/8 time signature.

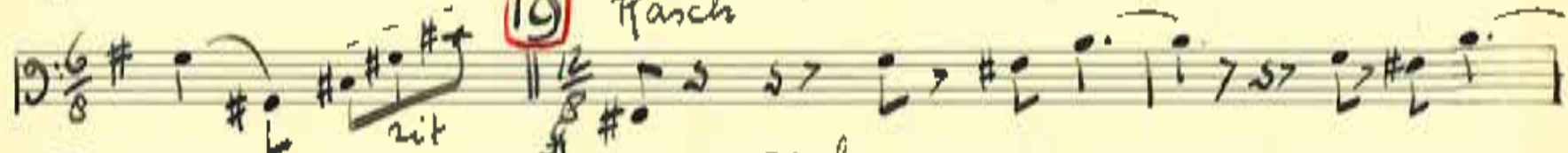
Handwritten musical notation on a single staff. It starts with a treble clef and a 9/8 time signature. A dynamic marking of *mf* is written below the staff. The piece concludes with a double bar line and a 12/8 time signature.

Plötzlich Breiter

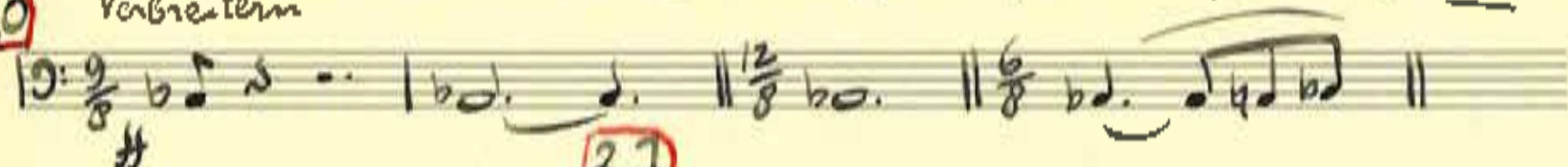




19 Marsch



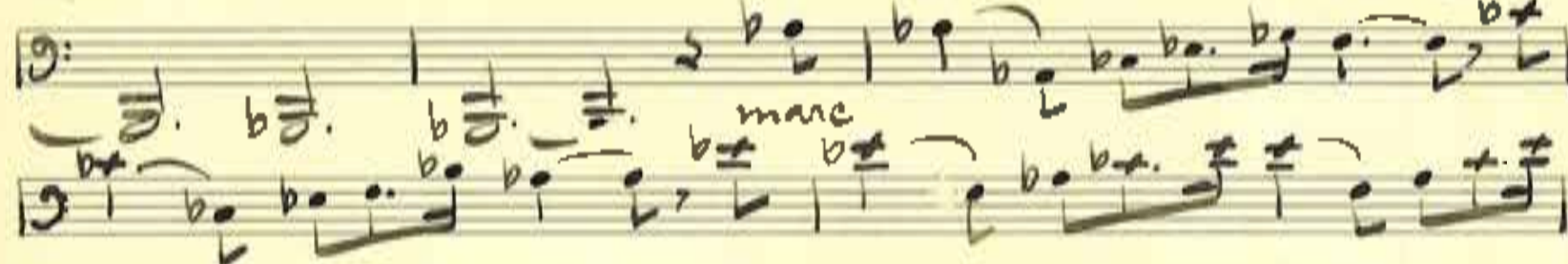
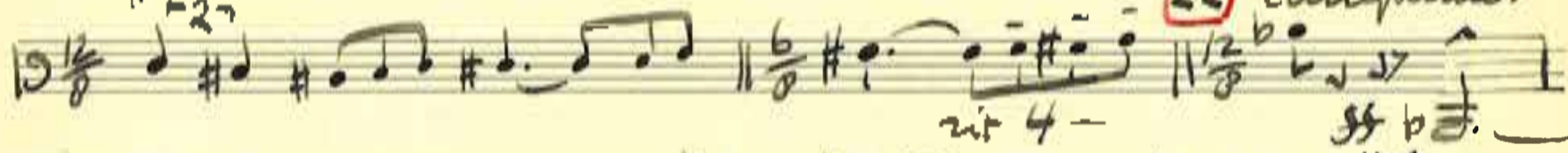
20 Verbreitern



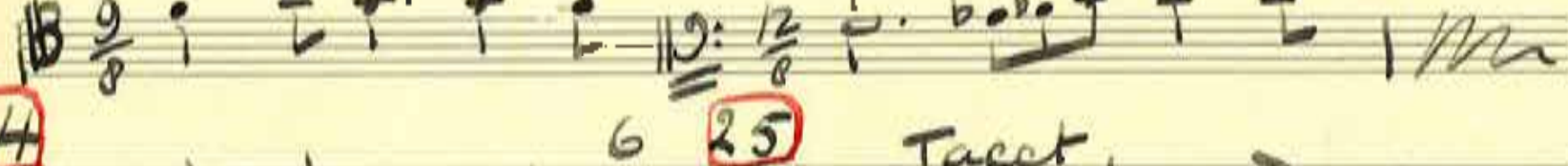
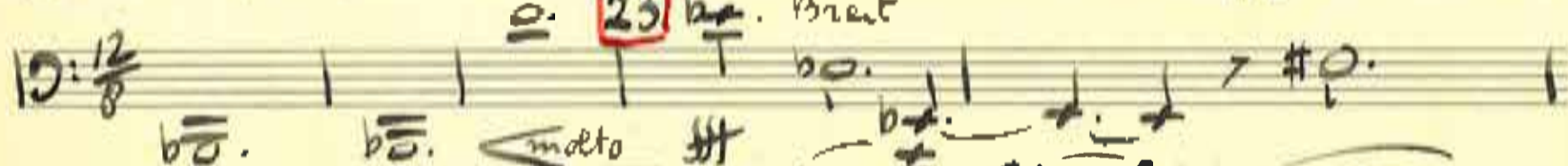
21



22 Langsamer



23 Breit



24

25

Tacet

Fine.

