

# Jan Stuten

(15. August 1890 - 25. Februar 1948)

*Musik für die Eurythmie*

## Ausklang für Streichquartett

Komponiert im September 1940

Cello

V. Cello

Rückklang

Jan. Stulen

Handwritten musical notation on two staves. The first staff begins with a treble clef, a key signature of one flat (B-flat), and a common time signature (C). It contains several measures of music with notes, rests, and dynamic markings like *p* and *mf*. The second staff continues the melody with similar notation and includes a time signature change to 2/4.

Handwritten musical notation on a single staff. Above the staff, the word *rit...* is written, followed by *Tempo 1.* The staff contains musical notation with notes and rests, and a dynamic marking *p*.

Handwritten musical notation on a single staff. It features a treble clef, a key signature of one flat, and a common time signature. The notation includes notes, rests, and dynamic markings such as *p* and *mf*.

**1** etwas ruhiger. etwas ruhiger

Handwritten musical notation on a single staff. It includes a treble clef, a key signature of one flat, and a common time signature. The notation features notes, rests, and dynamic markings like *mf*, *rit*, and *pp*.

Handwritten musical notation on a single staff. It contains a treble clef, a key signature of one flat, and a common time signature. The notation includes notes, rests, and dynamic markings such as *pp*.

Handwritten musical notation on a single staff. It features a treble clef, a key signature of one flat, and a common time signature. The notation includes notes, rests, and dynamic markings like *f*.

**2**

Handwritten musical notation on a single staff. It includes a treble clef, a key signature of one flat, and a common time signature. The notation features notes, rests, and dynamic markings like *p* and *poco rit*.

**3**

wenden.

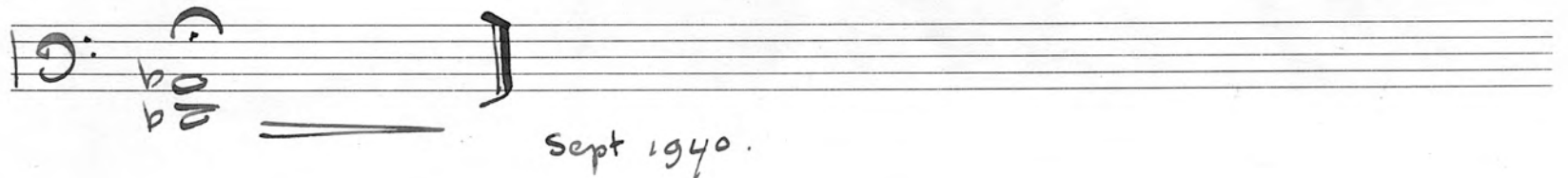
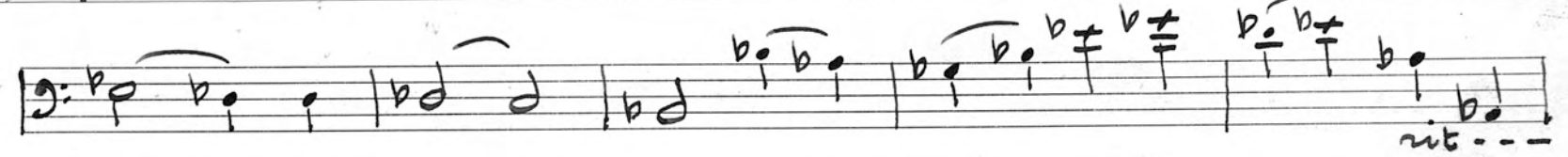
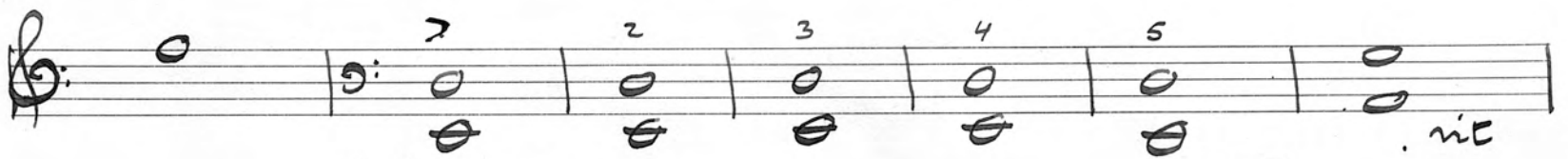
*f* w. Spring

Handwritten musical score, measures 1-3. The notation is in bass clef with a 3/4 time signature. Measure 1 contains a half note G2, a quarter note A2, and a half note B2. Measure 2 contains a half note C3, a quarter note D3, and a half note E3. Measure 3 contains a half note F3, a quarter note G3, and a half note A3. Dynamics include *ff* and *f*. A box containing the number 4 is present above measure 3.

Handwritten musical score, measures 4-5. Measure 4 contains a half note B2, a quarter note C3, and a half note D3. Measure 5 contains a half note E3, a quarter note F3, and a half note G3. Dynamics include *mf* and *f*. The word *pizz* is written above measure 5. A box containing the number 5 is present above measure 5.

Handwritten musical score, measures 6-7. Measure 6 contains a half note A2, a quarter note B2, and a half note C3. Measure 7 contains a half note D3, a quarter note E3, and a half note F3. Dynamics include *ff* and *p*. The word *arco* is written above measure 6, and *pizz* is written above measure 7. A box containing the number 6 is present above measure 6.

Handwritten musical score, measures 8-9. Measure 8 contains a half note G2, a quarter note A2, and a half note B2. Measure 9 contains a half note C3, a quarter note D3, and a half note E3. Dynamics include *ff* and *pp*. The word *arco* is written above measure 8, and *pizz* is written above measure 9. A box containing the number 7 is present above measure 7. The word *docca* is written below measure 9.



Sept 1940.